

Golden West Homes

Confidential Option Price List

Glossary

2022 Golden West Option Pages

Baths Master Bath Opts. 2 Guest Bath Opts. 22 Bay Window 8 Cabinets 14-15 Closets / Wardrobes 17 Ceiling, Flat 6 Ceramic Tile Kitchen 19-20 Baths 22 Décor / Valances 17 Deco Door Molding 17 Doors, Exterior 9 Doors, Interior 16 Energy Star/Eco Grn 3 Exterior Opts. 7-8 Fireplaces / Woodstove 18 Flooring 13 Foundation/Chassis 8 Furnaces 11	Gables/Dormers 6 Hose Bibs 8 Hardware 2,15 Hutch/Cab Opts. 15 Interior Electrical 17 Interior Paint 17 Insulation 3 Lap Siding 7 Laundry Tub 11 Lighting, Exterior 8 Lighting, Interior 12 Linoleum 13 Meter Base 11 Mini Blinds 17 Molding 17 Plumbing 11 Porches 7 Recessed Entry 7 Roof Loads 4	Roof Pitch 4 Shingles 6 Shutters 7 Siding 7 Sinks 19, 22 Solar Tube 9 Sliding Glass Doors 9 Stretches / Flips 8 Tags 24 Transportation Heights 5 Tub/Showers 23 Water Heaters 11 Windows 10 Utility Room Opts. 11	<u>Carpet Matrix Pages</u> Dream Series 25 Inspiration Series 26 Platinum Series 27 Misc. Models 28 <u>Model Specific Opts.</u> Dream Series 29-30 Inspiration Series 29-30 Platinum Series 29-30 Misc. Models 29-30 <u>Packages</u> Exterior Opts. 1-2 Interior Packages 2 Appliances 20-21
--	---	--	---

UPDATED 11.17.2022 ds

Do to our continuous improvement efforts we reserve the right to change standard features, prices, materials and specifications without notice or obligation

DREAM *Silver* SERIES * INSPIRATION *Gold* SERIES * PLATINUM SERIES

Leading the Way

Golden West Homes

Confidential Option Price List Exterior Package

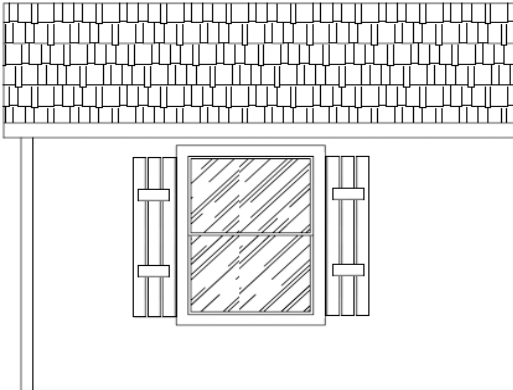
Residential Exterior Upgrade

Includes:
 8' 9";12 Gable w/ Extended Eaves
 (2) 8" Traditional Columns FDS
 Lap Between Columns
 Coach Light (2) at Front Door
 Shutters on FDS Only
 5/4 Window Trim FDS Only

\$1,985

** Dream Double Wide Only

**Exterior Look is Model Specific



Craftsman Exterior Upgrade

Includes:
 8' 9";12 Gable w/ Extended Eaves and Box-out
 8' 9";12 Gable
 Lap (8) Rows FDS Only
 Board & Batt Accent Area
 Small Board & Batt Accent at Top of Gables
 5/4 Window Trim FDS Only
 Recessed Entry

Consult Factory

**Exterior Look is Model Specific
 ***Box-out and Gable Quantities will vary by Model



Shady Cove Upgrade

Includes:
 Large Double Gable
 Small Flush Gable (Per Plan)
 Box-outs on Front Sidewall
 Lap FDS Only
 Stack Stone Accents
 Coach Light (1) at Front Door
 Shutters (4 Board) on FDS Only
 5/4 Window Trim FDS Only
 Painted Front Door
 14" Eaves (front & rear Sidewalls)

Consult Factory

**Exterior Look is Model Specific - Box-Out and Gable Quantity will Vary per Model
 ***Not Available on Some Models

Golden West Homes Confidential Option Price List Packages

Bathroom Packages

Glamour Master Bath (Where Applicable)

Bathroom Includes the Following items:
 Fiberglass Shower Stall (Size Varies by Model)
 Large Soaking Tub (Size Varies by Model)
 Window Over Soaking Tub
 Towel & Tissue Holders
 Linen Cabinet are Optional and not Included

Bath with 60" Oval Drop-in Tub	\$1,955
Bath with 72" Permalux Tub	\$2,455
Bath with 59" Free Standing Tub	\$4,250

Oil Rub Hardware

Oil Rub Options

ORB - Towel & Tissue Holders, Add (per bath)	\$61
ORB - Towel & Tissue Holders, ilo Std Nickel (per bath)	\$24
ORB - Door Hardware, Int, Passage (per door)	\$4
ORB - Door Hardware, Int, Privacy (per door)	\$5
ORB - Door Hardware, Int, Privacy ilo Passage (per door)	\$7
ORB - Door Hardware, Ext, with Dead Bolt (per door)	\$8
ORB - Door Hardware, Ext, Thumb Latch with Dead Bolt (per door)	\$55
ORB - Cabinet Knobs & Pulls (t/out)	\$75
ORB - Cabinet Knobs & Pulls, ilo Std Nickel Knobs & Pulls (t/out)	\$55
ORB - Pull Out Facucet (per sink)	\$145
ORB - "Miss Kay" Pull Down Facucet (per sink)	\$190
ORB - "Miss Kay" Pull Down Facucet, ilo Std "Miss Kay" (per sink)	\$55
ORB - Lavy Faucets (per sink)	\$55
ORB - Tub/Shower Faucet (per tub/shower)	\$70
ORB - Tub/Shower Faucet with Rain Shower Head (per tub/shower)	\$235
ORB - Shower Faucet (per shower)	\$65
ORB - Shower Faucet with Rain Shower Head (per shower)	\$200
ORB - Tub, Drop In, Faucet (per tub)	\$55

Toe Kick (Kichen & Baths)

Where Applicable **\$234**

Gas Home Package

Includes the Following items
 Gas Furnace
 Gas Water Heater
 Gas Range
 100 or 200 Amp Service (Please Verify)

Total Package **\$2,908**

Packages

Dream Treatment Package (Dream Series DW Only)

4" Crown Moulding (Living Areas Only)
 Laminate, 4" B-Splash (Kitchen, M/Bath, G/Bath)
 Drawer Over Door (Kitchen)
 Cornice Boxes (Living, Dining)
 Cabinet Overhead Crown Moulding

S/W Total Package Price **\$642**
D/W Total Package Price **\$777**

Dream Deluxe Treatment Package (Dream Series DW Only)

9' Side Walls
 Residential Exteroir
 52" Overhead Cabinets, Kitchen
 Dishwasher
 Wood Trimmed Mirrors
 Drawer Over Door, Refer Cab, Bank of Drawers P/Bath
 Laminate B-Splash 4" T/Out
 Towel & Tissue Bars
 Crown Molding (Living Areas)
 Base Boards 2-1/4" T/Out
 Cornice Boxes (Living, Dining)
 Mini Blinds (T/Out)

D/W Total Package Price **\$5,395**

Buster Glamour Package

Full B-Splash Kitchen (Level #3)
 Textured Glass Doors on Shadow Boxes, Kitchen
 Dual Vitreous China Sinks, Master Bath
 60" Fiberglass Shower w/Enclosure, M/Bath
 4" Base Board Molding , T/Out
 Knotty Alder RP Cabinets, T/Out
 W-21 Wdw's (Living Areas Only)
 W-25 Wdw Kitchen (Per Model)
 W-13 Wdw M/Bath

Total Package Price **\$2,976**

Factory Tours

Tours - By Appointment Only - **No Tours at this Time COVID-19**
 No Open Toe Shoes
 No One Under 12 Yr Old

\$0

Golden West Homes Confidential Option Price List Insulation

Standard Insulation Floor R-22, Walls R-19 (R-11 w/2x4), Ceiling R-33						
R-21 Wall Insulation exchange R-19	Single-Wide	13.5W	\$182			
		15W	\$182			
	Double-Wide	36'-56'	\$203			
		57'-71'	\$260			
	Triple-Wide	All	\$338			
R-40 Ceiling Insulation exchange R-33	Single-Wide	13.5W	\$187			
		15W	\$208			
	Double-Wide	38'-48'	\$260			
		50'-60'	\$312			
		64'-68'	\$364			
	Triple-Wide	38'-48'	\$364			
	50'-60'	\$468				
	64'-68'	\$572				
R-52 Ceiling Insulation exchange R-33 or R-40	R-33 to R-52	Lf. Per Floor	\$11			
	R-40 to R-52	Lf. Per Floor	\$6			
R-33 Floor Insulation exchange R-22	Single-Wide	All	\$208			
	Double-Wide	All	\$468			
	Triple-Wide	All	\$702			
ENERGY STAR- Includes R-40 Ceiling, R-21 Walls, R-33 Floor, Low-E Windows						
<i>Upgraded Insulation - R-40 Ceiling, R-21 Walls, R-33 Floors Low-E Windows, Whole House Fan, Programmable Thermostat, Form Seal Exterior Recepts, (Includes 4/12 on 27' Vault Only)</i>			2x4 Walls Standard	SW	\$26	
				Per LF	DW	\$37
					TW	\$40
					TAG	\$520
			2x6 Walls Standard	SW	\$14	
				Per LF	DW	\$19
		TW	\$23			
		TAG	\$312			
Eco-Green	<i>Requires Energy Star; Eco-Green Includes House Wrap, Low VOC Interior Paint, Argon Windows, Low Flow Shower Heads</i>		Electric	\$723		
			Gas	\$723		
Wildland Urban Fire Code- (all series) Includes...						
<u>7/16 LP Siding</u> <i>Low-E Tempered Windows, Non Vented Eaves & soffits High/Low Attic Vents, 15# Felt Paper on 7/16" OSB Sub-roof</i>			Single-wide	\$1,196		
			Double-wide	\$2,632		
			Triple-wide	\$2,028		
<u>7/16 8' Tall LP Siding w/ (4) Rows Lap Siding</u> <i>Low-E Tempered Windows, Non Vented Eaves & soffits High/Low Attic Vents, 15# Felt Paper on 7/16" OSB Sub-roof</i>			Single-wide	\$2,023		
			Double-wide	\$2,791		
			Triple-wide	\$2,340		
Exterior Walls - 2x4 to 2x6 (Includes R-19)			Per LF (Example 27x48 = 150)	\$14.50		
Floor Joist - 2x8 ilo 2x6			Per LF (Example DW 27, 2x48 = 96)	\$18.00		

Golden West Homes

Confidential Option Price List

Roof Load / Roof Pitch

7'-6" SIDEWALLS - Vault

90" SIDEWALL HEIGHT 13' 6", 15" WIDE FLOORS

30#				40#				60#				80#			
	27 Wide	30 Wide	Triple		27 Wide	30 Wide	Triple		27 Wide	30 Wide	Triple		27 Wide	30 Wide	Triple
3/12	Std	Std	Std	3/12	\$33 (LF)	\$43 (LF)	\$64 (LF)	3/12	\$132 (LF)	\$98 (LF)	\$155 (LF)	3/12	\$88 (LF)	\$98 (LF)	\$125 (LF)
4/12	\$890	\$890	\$105 (LF)	4/12	\$40 (LF)	\$40 (LF)	\$180 (LF)	4/12	\$162 (LF)	\$118 (LF)	\$188 (LF)	4/12	\$152 (LF)	\$145 (LF)	\$203 (LF)
6/12	\$107 (LF)	\$138 (LF)	\$194 (LF)	6/12	\$203 (LF)	\$213 (LF)	\$434 (LF)	6/12	\$231 (LF)	\$293 (LF)	Factory	6/12	\$231 (LF)	\$293 (LF)	Factory

8'-0" SIDEWALLS

96" SIDEWALL HEIGHT 13' 6", 15" WIDE FLOORS

(Inspiration Triples Standard with 2.57/12 Roof Pitch)

30#				40#				60#				80#							
	Single	27 Wide	30 Wide	Triple		Single	27 Wide	30 Wide	Triple		Single	27 Wide	30 Wide	Triple		Single	27 Wide	30 Wide	Triple
3/12	N/A	Std	Std	\$110 (LF)	3/12	N/A	\$36 (LF)	\$41 (LF)	\$180 (LF)	3/12	N/A	\$65 (LF)	\$79 (LF)	Factory	3/12	N/A	\$65 (LF)	\$108 (LF)	Factory
4/12	Std	\$2,467	\$107 (LF)	\$113 (LF)	4/12	\$27 (LF)	\$70 (LF)	\$180 (LF)	\$195 (LF)	4/12	\$34 (LF)	\$102 (LF)	\$203 (LF)	Factory	4/12	\$38 (LF)	\$179 (LF)	\$203 (LF)	Factory
6/12	\$14 (LF)	\$128 (LF)	\$165 (LF)	Factory	6/12	\$40 (LF)	\$203 (LF)	\$255 (LF)	Factory	6/12	\$39 (LF)	\$278 (LF)	\$293 (LF)	Factory	6/12	\$39 (LF)	\$278 (LF)	\$293 (LF)	Factory

8'-6" SIDEWALLS

102" SIDEWALL HEIGHT 13' 6", 15" WIDE FLOORS

30#				40#				60#				80#							
	Single	27 Wide	30 Wide	Triple		Single	27 Wide	30 Wide	Triple		Single	27 Wide	30 Wide	Triple		Single	27 Wide	30 Wide	Triple
3/12	N/A	Std	Std	Std	3/12	N/A	\$43 (LF)	\$43 (LF)	\$81 (LF)	3/12	N/A	\$65 (LF)	\$80 (LF)	\$188 (LF)	3/12	N/A	\$74 (LF)	\$148 (LF)	\$188 (LF)
4/12	Std	\$152 (LF)	\$107 (LF)	\$203 (LF)	4/12	\$27 (LF)	\$180 (LF)	\$180 (LF)	\$315 (LF)	4/12	\$38 (LF)	\$210 (LF)	\$203 (LF)	Factory	4/12	\$38 (LF)	\$210 (LF)	\$203 (LF)	Factory
6/12	\$14 (LF)	\$128 (LF)	\$165 (LF)	\$165 (LF)	6/12	\$30 (LF)	\$203 (LF)	\$255 (LF)	\$293 (LF)	6/12	\$42 (LF)	\$278 (LF)	\$293 (LF)	Factory	6/12	\$42 (LF)	\$278 (LF)	\$293 (LF)	Factory

9'-0" SIDEWALLS

108" SIDEWALL HEIGHT 13' 6", 15" WIDE FLOORS

30#				40#				60#				80#							
	Single	27 Wide	30 Wide	Triple		Single	27 Wide	30 Wide	Triple		Single	27 Wide	30 Wide	Triple		Single	27 Wide	30 Wide	Triple
3/12	N/A	Std	Std	Std	3/12	N/A	\$37 (LF)	\$53 (LF)	\$81 (LF)	3/12	N/A	\$47 (LF)	\$81 (LF)	\$188 (LF)	3/12	N/A	\$58 (LF)	\$81 (LF)	\$188 (LF)
4/12	Std	\$141 (LF)	\$126 (LF)	\$203 (LF)	4/12	\$18 (LF)	\$180 (LF)	\$204 (LF)	\$315 (LF)	4/12	\$38 (LF)	\$267 (LF)	\$143 (LF)	Factory	4/12	\$38 (LF)	\$210 (LF)	\$143 (LF)	Factory
6/12	\$14 (LF)	\$128 (LF)	\$105 (LF)	\$165 (LF)	6/12	\$30 (LF)	\$203 (LF)	\$195 (LF)	\$293 (LF)	6/12	Factory	\$278 (LF)	\$225 (LF)	Factory	6/12	Factory	\$278 (LF)	\$225 (LF)	Factory

Consult Factory on 120# and 150# as There will be Structural Changes Required

California Capped 3/12, 30# 108" Sidewall \$74 Per Lf Capped 3/12, 40# 108" Sidewall \$132 Per Lf

60# and Above will Require Microlam Splice Ridge Beam, (\$1002.00 D/W)
AC and/or SC Letter Required for any Hinged or Cap Roof or Site Installed for Completed Items.
Gables on 5/12 and 6/12 Maybe Shipped Loose for Retailer to Install On-Site Due to Hinge Point

Golden West Homes Confidential Option Price List Transportation Heights

	96" SIDEWALL - 41' TRIPLE WIDE	5/12	14'-8" capped
		2.57/12	14'-7"
	102" SIDEWALL - 24' DOUBLE WIDE	3/12	15'-3"
		-	-
		3/12	15'-8"
		4/12	15'-5" hinged
		5/12	16'-0" capped
		6/12	14'-10" hinged
		3/12	16'-0"
		4/12	15'-4" capped
		5/12	N/A
		6/12	15'-3"
		3/12	15'-8"
		4/12	TBD capped
		5/12	16'-0" capped
		3/12	15'-9"
		6/12	15'-10" hinged
		3/12	16'-1"
		4/12	15'-11" hinged
		5/12	16'-0" capped
		6/12	15'-4" hinged
		3/12	15'-11" capped
		4/12	15'-11" capped
		5/12	15'-8" capped
		6/12	15'-9" hinged
		3/12	16'-1"
		4/12	TBD capped
		5/12	16'-0" capped
		6/12	15'-4" capped
		4/12	13'-8"
		4/12	13'-10"
		4/12	14'-2"
		4/12	-
		4/12	14'-10"
		4/12	15'-2"

For 2016 specification houses only. Prior
All heights assumed
Note: 10" I-beam with equi

Golden West Homes

Confidential Option Price List

Roofing / Gables / Dormers

Roofing	Standard	
	Landmark Architectural Moire Black, Weathered Wood,	
		Gables and Dormers <hr/> Flush Gables 8' - Flush Gable \$1,013 8' - Flush 9:12 Gable \$1,024 12' - Flush Gable \$1,185 16' - Flush Gable \$1,481 20' - Flush Gable \$1,676 24' - Flush Gable \$1,825 27' - Flush Gable \$2,562 Omit Std 8' Gable -\$125 Omit Std 16' Gable -\$250 Eyebrow Dormer, Endwall or Sidewall \$156 <hr/> Double Gables 16' - Double Gable \$1,689 24' - Double Gable \$2,275 27' - Double Gable \$2,645 Omit Std 27/13 Double Gable -\$450 <hr/> Mount Hood Dormer (Vault Only) Mount Hood Dormer, 4:12 Only, 13.5' & 15' with (3) Windows \$3,675 <hr/> Tower Dormer (Vault Only) Tower Dormer with Box-out, 3:12, 13.5' with (3) Windows \$5,019 Tower Dormer with Box-out, 4:12, 13.5' with (3) Windows \$5,019
Flat Ceilings		HIGH FLAT CEILING 9'-0" Sidewall ipo 8"-0" Flat (SINGLE WIDE ONLY) (80" Windows and Tall Cabinets Not Included) \$2,240 HIGH FLAT CEILING 9'-0" Sidewall ipo 8"-6" Flat (27 WIDE ONLY) (80" Windows and Tall Cabinets Not Included) \$995 HIGH FLAT CEILING 8'-6" Sidewall ipo 8"-0" Flat (27 WIDE ONLY) (80" Windows and Tall Cabinets Not Included) \$1,386 HIGH FLAT CEILING 9'-0" Sidewall ipo 8"-0" Flat (27 WIDE ONLY) (80" Windows and Tall Cabinets Not Included) \$2,760 HIGH FLAT CEILING 8'-6" Sidewall ipo 8'-0" Flat (30 WIDE ONLY) (80" Windows and Tall Cabinets Not Included) (No Cap) \$3,943 HIGH FLAT CEILING 9'-0" Sidewall ipo 8'-0" Flat (30 WIDE ONLY) (80" Windows and Tall Cabinets Not Included) (With Cap) \$4,176 HIGH FLAT CEILING 8'-6" Flat Sidewall ipo 7"-6" Vault (TRIPLE WIDE ONLY) (80" Windows and Tall Cabinets Not Included) \$4,750 HIGH FLAT CEILING 9'-0" Flat Sidewall ipo 7"-6" Vault (TRIPLE WIDE ONLY) (80" Windows and Tall Cabinets Not Included) \$5,445 COFFERED CEILING (PER ROOM) (CONSULT PRINTS FOR AVAILABILITY - ONLY AVAILABLE IN FLAT CEILINGS) \$680 COFFERED CEILING STRETCH (PER ROOM) LF. \$75 COFFERED CEILING - Omit -\$125 CROWN MOLDING Inside Coffered Ceiling \$156 NOTE - 3/12 & 4/12 ROOF PITCH WILL GET A 6" DEEP COFFERED CEILING - 6/12 PITCH WILL HAVE A 12" DEEP COFFER
Vaulted Ceilings		VAULTED CEILING 7'-6" Sidewall ipo Flat Ceiling \$3,566

Golden West Homes

Confidential Option Price List

Exterior

Recessed Entry (Recessed Options Include Can light ilo Wall Light)		Lap Siding	
w/ Notched Floor	\$600	ilo Std Siding Sidewall (per sidewall LF)	\$14
w/ Fiberon Deck	\$829	Staggered Endwall Lap, Dealer Finish Install (per floor endwall)	\$189
w/ Fiberon Deck 30" Deep	\$855		
Porches (All Porch Options Include Can light ilo Wall Light)		Lap Siding & Board and Batt - Includes Energy Brace Under Lap	
Corner Porch ilo Living Space (4'x4')	\$1,355	ilo Std Siding (per LF)	\$41
Corner Porch ilo Living Space (4'deep 1 floor)	\$2,505		
Corner Porch ilo Living Space (6'deep 1 floor)	\$2,391		
Corner Porch ilo Living Space (8'deep 1 floor)	\$3,265		
Porch, Opt, Family Rm, W/ Rails INS681F	\$3,445		
Cottage Porch w/Cedar Rail--DW Only (Includes Reverse Hitches)	\$14,180		
Porch - 6/7'4" Off-Set w/Cedar Rails--DW	\$11,755		
Porch - 4' w/Cedar Rails--SW	\$4,180		
Porch - 4' w/Cedar Rails--DW	\$8,685		
Porch - 4' w/Cedar Rails--TW	\$8,350		
Porch - 6' w/Cedar Rails--SW	\$5,645		
Porch - 6' w/Cedar Rails--DW	\$10,685		
Porch - 6' w/Cedar Rails--TW	\$15,985		
Porch - 8' w/Cedar Rails--SW (Includes Reverse Hitches)	\$6,635		
Porch - 8' w/Cedar Rails--DW (Includes Reverse Hitches)	\$12,565		
Porch - 8' w/Cedar Rails--DW 27' Wide- Spruce only (Includes Reverse Hitches)	\$12,785		
Porch - 8' w/Cedar Rails--DW 30' Wide- Spruce only (Includes Reverse Hitches)	\$13,355		
Porch - 8' w/Cedar Rails--TW (Includes Reverse Hitches)	\$16,905		
Porch - 10' w/Cedar Rails--SW (Includes Reverse Hitches)	\$9,155		
Porch - 10' w/Cedar Rails--DW (Includes Reverse Hitches)	\$14,785		
Porch - 10' w/Cedar Rails--TW (Includes Reverse Hitches)	\$16,726		
** Note the above added Porches include additional axles			
*** Note I-Beam up-grade maybe required with added Porch			
Add Porch Rail to Enclose Porch, Per LF	\$27		
Prow Endwall Options (Model Specific)		House Wrap	
Vaulted Ceiling		All Series	STD
Prow Endwall 27' - w/ 6 Angle Top Wdws, Vaulted Ceiling	\$6,480		
Prow Porch 27' - w/ 5 Angle Top Wdws, GW-17, Cedar Rails, Vaulted Ceiling	\$24,589		
Prow Endwall 30' - w/ 6 Angle Top Wdws, Vaulted Ceiling	\$9,474		
Prow Porch 30' - w/ 5 Angle Top Wdws, GW-17, Cedar Rails, Vaulted Ceiling	\$25,328		
Includes: 4/12, Reverse Hitches, 8' 10/12 Gable FDS, Vaused Ceiling (D/W Only)			
Flat Ceiling		Custom Exterior Paint	
Prow Porch 27' or 30' - w/ 5 - 80" Wdws, GW-17, Cedar Rails, Flat Ceiling	\$14,505	Per Color	Factory
Includes: 3/12, Reverse Hitches, 8' 10/12 Gable FDS, Flat Ceiling (D/W Only)			
		Exterior Paint (Ship Loose)	
		Per Gallon	\$42
		Poly Endwall Close-up	
		Per Floor	\$52
		Fiberon Porch Decking	
		Color "Cabin"	Std
		Columns (Per Column)	
		Flat 6" Sidewall Column	\$47
		Traditional 8" Sidewall Column	\$175
		Traditional 8" Porch Column	\$205
		Craftsman Columns, Sidewall	\$279
		Craftsman Columns, Porch	\$349
		Rock Columns with Tapered Top, Sidewall (Size May Vary)	\$472
		Rock Columns with Tapered Top, PORCH (Size May Vary)	\$629

Golden West Homes

Confidential Option Price List

Exterior

Exterior Add'l Items		Set Back Frame 4/8"	
Shutters - Plant Built (3 Board) (Per Window) 59" Wdw's	\$125	<i>All Models</i>	STD
Shutters - Plant Built (4 Board) (Per Window) 59" Wdw's	\$145		
Shutters - Plant Built (3 Board) (Per Window) 80" Wdw's	\$175		
5/4 Window Trim ilo 4" Window Trim	\$459		
Hose Bib - Add Ea.	\$62		
Hose Bib, Hot Water - Add Ea.	\$125	4" - Cement	\$104
		8" - Cement	\$322
Hose Bib, on Dry Floor Across Marriage Line	\$117		
Boxed-Out Window		Axles	
<i>Per Window</i>	\$300	<i>Brake Axles, All (Per Floor)</i>	\$275
Bay Window		<i>Add Add'l Brake Axle (Per Floor)</i>	\$656
End Wall	\$1,297	<i>Add Add'l Axle (Per Floor)</i>	\$624
Side Wall	\$1,297		
Clipped Corner Window's		Flip Floorplan	
<i>3 window cut corner (3 - W-35)</i>	\$440	<i>Side to Side</i>	\$390
Exterior Electrical		<i>End to End = Side to Side & Reverse Hitches (dw)</i>	\$702
GFI - Exterior Add'l, (1) Std Near Rear Door	\$99	Reverse Hitches	
GFI - Exterior Add'l w/Switch in Soffit	\$124	<i>Reverse hitches and axle relocate (per floor)</i>	\$156
Eave Light 4" Can in Soffit - Ea.	\$57		
Coach Light - ilo Jelly Jar	\$36	Stretch Plan (Consult Factory for all Stretches)	
Coach Light - Add'l	\$52	Lengthen in 16" increments	
Jelly Jar - Add'l	\$31	Single Wide	
Can Light 6" Porch - Add'l	\$57	<i>First 16" Stretch</i>	\$1,240
J-Box w/ Switch (110) - Ea.	\$52	<i>Additional 16" Stretch</i>	\$720
J-Box (220v / 30amp) - Ea.	295	Double Wide	
<i>Will Require Locate Per LF from Main Panel</i>	\$3	<i>First 16" Stretch</i>	\$2,471
J-Box (220v / 50amp) - Ea.	295	<i>Additional 16" Stretch</i>	\$1,421
<i>Will Require Locate Per LF from Main Panel</i>	\$4	Triple Wide	
Generator Ready		<i>First 16" Stretch</i>	\$3,057
<i>On-Site Hook-up Required</i>	\$1,374	<i>Additional 16" Stretch</i>	\$2,017
Solar Panel Prep w/Chase		STRETCHES MAY REQUIRE REQUIRE EXTRA AXLES	
	\$295.00	STRETCHES THROUGH CABINETRY - WILL REQUIRE ADDITIONAL COST	
Exterior Walls - 2x4 to 2x6 (Includes R-19)		STRETCHES MAY CHANGE I-BEAM SIZE	
<i>Per LF (Example 27x48 = 150)</i>	\$14.50	<i>12" I-Beam 56'-1" and Larger</i>	Per Floor \$782
		Microlam Beam	
		<i>Splice Beam</i>	\$1,002
		<i>Full Beam</i>	\$2,854
		Super Sizing a Home	
		13'6" to 15' Wide	\$3,664
		24' to 27' Wide	\$3,338
		27' to 30' Wide	\$11,543
		27' to 30' Wide	\$8,920
		27' to 24' Wide	\$700
		<i>30' Wides with 108 Sidewalls will Require a Cap Truss</i>	
		<i>30' Wides with 102 Sidewalls will Require a No Cap Truss</i>	
		<i>*** 27 to 30 Will Require I-Beam Up-Grade</i>	

Golden West Homes Confidential Option Price List Windows

Low-E Windows Standard

Windows

Relocate Any Window - ea.	\$52
Move Window Up - ea.	\$52

Window Width

21"

W-47 21"X59" VS	\$502
-----------------	--------------

24"

W-16 24" X 27" HS (Obsure/Safety)	\$362
W-75 24" X 54" VS (Safety)	\$556
W-79 24" X 54" VS (Obsure/Safety)	\$681
W-20 26" X 80" VS - High Flat	\$354

30"

W-72 30" X 40" VS	\$699
W-35 30" X 59" VS	\$490
W-28 30" X 80" VS - High Flat	\$499

36"

W-25 36" X 52" VS - High Flat	\$516
W-63 36" X 59" VS	\$590
W-21 36" X 80" VS	\$642

40"

W-5 40" X 38" HS (Clear/Safety)	\$596
---------------------------------	--------------

46"

W-24 46" X 52" VS (Clear/Safety)	\$743
W-64 46" X 59" VS	\$594
W-22 46" X 80" VS - High Flat	\$616

78"

W-10 78"x58" H (XOX)	\$778
W-10 78"x58" H (XOX) ilo W-63 36"x58" V	\$204
W-10 78"x58" H (XOX) ilo W-64 46"x58" V	\$195
W-10 78"x58" H (XOX) ilo (3) W-72 30"x39" V	\$52

96"

W-8 96"x39" H (XOX)	\$1,201
W-8 78"x58" H (XOX) ilo (3) W-72 30"x39" V	\$52
W-9 96"x58" H (XOX)	\$1,441
W-9 96"x58" H (XOX) ilo 46"x58" H	\$432
W-9 96"x58" H (XOX) ilo (2) 46"x58"s V	\$135
W-9 96"x58" H (XOX) ilo 72"x58" H	\$130

Transom

W-89 24" X 14"	Fixed, Transom	\$297
W-49 30" X 25"	Fixed, Transom	\$403
W-48 36" X 25"	Fixed, Transom	\$405
W-23 36"X10"	Fixed, Transom	\$420
W-50 46" X 25"	Fixed, Transom	\$498
W-12 46" X 10"	HS, Transom	\$343
W-13 46" X 10"	Fixed, Transom	\$328
W-29 72" X 12"	Fixed, Transom Over SGD or Patio Door	\$452

Sidelite Windows

W-26 12" X 72"	Fixed (Clear/Safety)	\$477
----------------	----------------------	--------------

Acrylic Block

W-14 18"X18", Acrylic Block	\$299
-----------------------------	--------------

Window Exchange

W-12 X W-23	\$64
W-10 X W-63	\$205
W-10 X W-64	\$205
W-10 X W-5	\$319
W-21 X W-35	\$183
W-21 X W-63	\$150
W-21 X W-64	\$156
W-22 X W-35	\$235
W-22 X W-63	\$205
W-22 X W-64	\$205
W-22 X W-21	\$75
W-24 X W-25	\$244
W-25 X W-72	\$162
W-64 X W-35	\$85
W-64 X W-63	\$68
W-79 X W-75	\$137
W-8 X W-5	\$324
W-9 X W-8	\$165
W-9 X W-10	\$155
W-9 X W-64	\$432

Window Omits

W-10	-\$120
W-12	-\$35
W-13	-\$35
W-16	-\$40
W-24	-\$85
W-26	-\$45
W-35	-\$65
W-48	\$50
W-49	-\$50
W-50	-\$50
W-63	-\$85
W-64	-\$85
W-72	-\$30
W-75	-\$50

Golden West Homes Confidential Option Price List Utility-Plumbing

UTILITY

Water Heaters

Electric

	40 Gallon	STD	
	50 Gallon	\$130	
	*** Add Additional 40 gal Electric Water Heater	\$815	
	*** Add Additional 50 gal Electric Water Heater	\$1,030	

Gas

	40 Gallon Gas	\$1,741	
	*** Add Additional 40 gal Gas Water Heater	\$2,289	
	Tankless Water Heater (Gas or Propane)	\$1,867	

*** Note to Retailer, **Tankless Water Heater** Has to be Ordered
Gas or Propane this unit can not be Converted

*** Tankless Water Heater is Requires to be on an Exterior Wall w/ Horizontal Vent
This will Require a Needed to be Relocated
*** Requires Plan Approval

Furnaces

Electric

Per Model **STD**

Gas (High Efficiency Furnace)

Per Model **\$1,211**

Ceiling Air Returns

ilo Return Air Vents Over Bedroom Doors **\$295**

Whole House Water Shut Off Valve

STD

Sink Shut Off Valve

STD

UTILITY

Washer / Dryer

	Plumb and Wire Washer & Wire & Vent Electric Dryer	STD
	Relocate Washer & Dryer (Will Also Require Plan Approval)	\$110
	Plumb for Gas Dryer w/ 110 Electrical Outlet	\$68
	Plumb for Gas Dryer w/ 220 Electrical Outlet	\$94

Dryer Recessed Venting

*Note, This May not be Available Due to Dryer Location **STD**

Boot Basin / Dog Wash (42"x42" Pan w/ Bench, Hand Held Head)

Consult Factory for Floor Plan Avilability **\$2,562**

Prep for Stacking Washer/Dryer

\$78

Cabinet Options

Wire Shelf over W/D	\$33	
Wood Shelf over W/D	\$55	
Cabinet w/ Pole over Washer/Dryer	\$260	
Three Door Cabinet over Washer/Dryer	\$278	
Freezer Overhead	\$145	
Laundry Tub w/ Base Cabinet	\$445	
Laundry Tub w/ Base Cabinet and Overhead Cabinets	\$625	
Sport Locker / Boot Bench	\$673	
Craft Center (Model Specific)	Factory	
Desk w/Overheads	Factory	
Folding Table w/ Broom Cab	\$585	
Folding Table w/ Over Head Cab	\$922	
Broom Cab	\$390	

Heat Pump /Air Condition Ready

(220-30 amp breaker, wire through floor and J-box under home) **\$140**

Meter Base (Ground Feed)

Installed on same section as panel box directly outside home **\$626**
To move to new location on same side of home **\$9 If**

Meter Base (Overhead Mast)

Installed on same section as panel box directly outside home **\$632**
To move to new location on same side of home **\$9 If**

Main Panel - Upgrade

200 amp Main Panel 40/40 (Larger Panel w/ More Breaker Space) **Std**

Golden West Homes

Confidential Option Price List

Electrical

Interior Lights

6" Recessed LED Light Additional	\$57
Under Cabinet Inch Light (13")	\$98
Pendant Light (Oil Rub or Nickel)	\$62
Pendant Light - Patriot Style (Nickel Only)	\$62
Wire and Brace Only for Chandelier w/ Single Switch	\$36

Ceiling Fans w/Light

Ceiling Fan w/ Light & w/ Double Switch (Oil Rub or Nickel)	\$217
Wire and Brace Only w/ Double Switch	\$47

Switches

3-Way Switch	\$36
Dimmer switch I/O Std - Not available on 3-way switch	\$45
Rocker Switches ilo Toggle Switches T/O	\$156

Miscellaneous

Add Bath Style Fan	\$156
Fan, 300 CFN, Add - Kitchen ilo Range Hood	\$495
Whole House Fan, Add	\$260
Drop Box w/ Raceway (TV & Phone)	\$26
Recept Additional Interior (Provide Location) ea.	\$26
Recept - Double Gang ilo Single Gang (Provide Location) ea.	\$26
Recept - Double Gang, Additional (Provide Location) ea.	\$56
Recept - Dedicated Circuit (Provide Location)	\$99
USB Port / Recept, Add - *Note, (1) STD in Kitchen - Except for Dream Series	\$91

Bathrooms

6" Can LED, Gasketed for Wet Areas	\$57
J-Box Over Mirror, add	\$26

Kitchen

Ice Maker Prep Only	\$44
Garbage Disposal w/ Switch, add	\$170
Garbage Disposal Prep Only	\$26
Dishwasher Prep w/ Doors or w/ out Doors (Open)	\$68
Micro-Rangehood Prep Only	\$99
Trash Compactor Prep Only (15" Wide Opening & Recept)	\$99

Bed Room Light Soffit/Bridge

Light Soffit / Bridge (Includes (2) Can LED Lights)	\$325
Light Soffit / Bridge w/ (3) W-50's (Includes (2) Can LED Lights)	\$1,489

Gas Prep for Range

Plumb for Gas w/ 110 Electrical Outlet	\$94
Plumb for Gas w/ 220 Electrical Outlet	\$156

Golden West Homes Confidential Option Price List Floor Covering

FLOORS AND FLOOR COVERING

Carpet

See Product Line Carpet Chart for Pricing on **Pages 22 - 23**
 Charge per additional carpet color ordered **Call**
 Install Carpet - **SINGLE WIDE ONLY** (SQ.YD.) **\$4.16**

Carpet Pad

5.3# Carpet Pad **STD**
 7# 1/2 " Carpet Pad - Chart for Pricing on **Pages 22 - 23**

Entry Options

Entry Lino **STD**

Linoleum

Omit Linoleum per Room or Throughout **Call**

Linoleum ilo Carpet

Per LF
\$6.50
 Additional Charge of \$104 per Room Required for Baseboards

Linoleum Add No Exchange Carpet

Per LF
\$29.00

Golden West Homes Confidential Option Price List Cabinets

MDF Cabinet Upgrade

IncludesDrawer Over Door in Kitchen, Cabinet Crown and Bank of Drawers in Both Bathrooms (Per Plan)

\$622

MDF Cabinet Frames

MDF Face Frames Include (1) Bank of Drawer in Kitchen, do not Include Drawer Over Door or Sky Scape Overhead Cabinets

Seamless Drs & Face Frames

	Candle Glow RP Seamless	Tuscuni Elme RP Seamless	Verismo RP Seamless
Single Wide	STD	STD	STD
Double Wide	STD	STD	STD
Triple Wide	STD	STD	STD

Hard Wood Cabinet Frames

Hard Wood Face Frame Include (1) Bank of Drawer and Drawer Over Door in Kitchen, Sky Scpae Overhead Cabinet, Cabinet Crown, Lip Molding, (2) Shelves in O/H Cabinets and Bank of Drawers in Both Bath Rooms (per Plan)

Dream Series & Inspiration Series

	Knotty Alder Raised Panel	Rustic Hickory Raised Panel	Oak Tabocco Raised Panel	Smokey Mt. Grey Shaker	Charleston White Shaker	Rocky River Shaker
Single Wide	\$2,075	\$2,543	\$2,469	\$2,469	\$2,469	\$2,469
Double Wide	\$2,450	\$3,105	\$3,976	\$3,976	\$3,976	\$3,976
Triple Wide	\$3,385	\$4,695	\$5,690	\$5,690	\$5,690	\$5,690

Platinum Series

	Knotty Alder Raised Panel	Rustic Hickory Raised Panel	Oak Tabocco Raised Panel	Smokey Mt. Grey Shaker	Charleston White Shaker	Rocky River Shaker
Double Wide	Standard	\$1,048	\$2,294	\$2,333	\$2,137	\$2,137
Triple Wide	Standard	\$2,096	\$3,227	\$3,227	\$3,227	\$3,227

Golden West Homes

Confidential Option Price List

Cabinet Options

Kitchen Options

48" Tall Kitchen Overhead Cabs (8'-6" sidewall, No Soffit)	\$609
52" Tall Kitchen Overhead Cabs (9' Sidewall, with 4" Soffit)	\$609
Lazy Susan - Upper Corner Cabinet & Upper Part of Pantry Cabinet	\$130
Lazy Susan - Base Corner Cabinet Only	\$203
Cookie Sheet Storage	\$52
Pot & Pan Drawers (Drawer Size is 24"x(2) 14")	\$156
Pot & Pan Drawers (Drawer Size is 24"x(1) 4", (1) 6", (1) 14")	\$156
Pullout Shelves (set of 2) w/ (1) Doors	\$88
Pullout Shelves (set of 2) w/ (2) Doors	\$104
Bank of drawers, Add, 12" or 15" Wide (where applicable)	\$178
Bank of drawers, Add, 24" Wide (where applicable)	\$172
Island 2 Door Wide (where space permits)	\$513
Island 2 Door Wide w/Snack Bar (where space permits)	\$515
Island 2 Door Wide w/Raised Snack Bar (where space permits)	\$619
Island "Miss Kay" (where space permits)	\$850
Island Gathering (where space permits)	\$861
Island "Miss Kay" ilo Std Island (where space permits)	\$257
Shadow Boxes, Add, Kitchen	\$395
Solid Door to Shadow Box (ea.)	\$35
Glass Door to Shadow Box (ea.)	\$60
Glass Doors ilo Solid (ea.)	\$48
Refer Overhead	\$145
Refer Overhead 24" Deep ilo 12" Deep	\$26
Sheetrock Soffit above Overhead Cabs	\$312
Cabinet Door, Add to Back Side of Snack Bar	\$50
Base & Overhead Cabinets, Add, Per LF	\$215
Base Cabinet Only, Add, Per LF	\$123
Pantry Cabinet, Add, Per LF	\$220

Country Cupboard / Hutch Cabinet

Bump-Out, No Glass Doors	\$1,156
Bump-Out, w/ O/H Glass Texture Doors	\$1,460

Omit Shadow Boxes

Inspiration & Busters	Factory
-----------------------	----------------

Pantry Cabinets

Pantry Cabinet or Oven/Microwave Pantry Cabinet	\$515
Pantry Cabinet - 2 Door	\$468
Pantry Cabinet - 4 Door	\$639
Pantry Cabinet - 6 Door	\$837

Pantry Walk-In

Walk-In Corner	\$818
Walk-In Std	\$852
Walk-In Hidden	\$792
Add Additional Shelf	\$22

Bath Rooms

Bank of drawers, Add, 12" or 15" Wide (where applicable)	\$168
Bank of drawers, Add, 24" Wide (where applicable)	\$172
Linen Cabinet - 2 Door	\$485
Linen Cabinet - 4 Door	\$639
Linen Cabinet - 6 Door	\$837
Linen Cabinet Over Toilet w/ No Doors	\$47
Linen Cabinet Over Toilet w/ Doors	\$223
Linen Cabinet Over Toilet w/ Doors & Shadow Box	\$130
Lavy Cab 36"	\$52
Doors ilo Cubby Style Lavy	\$78
Cab Between Mirrors, Add	\$78
Cab Between Mirrors, Omit, If std	-\$25
Vanity w/Drawers ilo Sink	\$375

P/Wardrobe

Island w/Drawers (where space permits)	\$644
--	--------------

Utility Room

Wire Shelf over W/D	\$26
Wood Shelf over W/D	\$55
Cabinet w/ Pole over Washer/Dryer	\$334
Three Door Cabinet over Washer/Dryer	\$340
Freezer Overhead	\$145
Laundry Tub w/ Base Cabinet	\$584
Laundry Tub w/ Base Cabinet and Overhead Cabinets	\$815
Sport Locker / Boot Bench	\$744
Craft Center (Model Specific)	Factory
Desk w/ Overheads	Factory
Folding Table w/ Broom Cab	\$585
Folding Table w/ Over Head Cab	\$922
Broom Cab	\$371

Cabinet Hardware

Round Knobs on Doors & Drawers - Nickel (Dream Series & Inspiration Series)	STD
Round Knobs on Doors & Pulls on Drawers - Nickel	STD
Round Knobs on Doors & Pulls on Drawers - Oil Rub	\$26
5" Arched Pulls - Nickel or Oil Rub (All Doors & Drawers)	\$78
Contemporary Pulls "Boat Tie Down" - Nickel (All Doors & Drawers)	\$234

Stainless Steel Ball Bearing Drawer Guides (T-Out)	STD
Soft Close ilo Std Stainless Steel Ball Bearing Drawer Guides (Per Drawer)	\$16

Soft Close Cabinet Doors Hinges (T-Out)	\$125
---	--------------

Special Note ****

Shadow Boxes, Cubbies, Entertainment Centers
 *Black Panel is Standard in all Cabinet Colors Except White that Includes White Panel

Golden West Homes

Confidential Option Price List

Interior Doors

Door Hardware - Interior			
	<i>Lever Door Handles, Interior Doors Only, Brushed Chrome or ORB (Through-Out)</i>	<i>T/O</i>	\$99
	<i>Round Knobs, ORB ilo Round Knobs Nickel (Through-Out)</i>	<i>T/O</i>	\$99
	<i>Add Lock to Interior Passage Door</i>	<i>Ea.</i>	\$25
2-Panel White Passage Door			
	<i>w/ STD Round Knobs</i>		STD
	<i>Omit Interior Door</i>		-\$15
Pocket Door			
	<i>Add or Exchange</i>	<i>Ea.</i>	\$573
Pantry Door			
	<i>White Door - Ribbed Glass</i>	<i>Ea.</i>	\$685
Double Passage Doors			
	<i>ilo Single Passage Door</i>	<i>Ea.</i>	\$237
	<i>Add no Exchange</i>	<i>Ea.</i>	\$630
French Doors			
	<i>Single French "Ribbed Glass" interior doors ilo double doors</i>	<i>Ea.</i>	\$685
	<i>Single French "Ribbed Glass" interior doors no exchange</i>	<i>Ea.</i>	Call
	<i>Double French "Ribbed Glass" interior doors ilo double doors</i>	<i>Ea.</i>	\$619
	<i>Double French "Ribbed Glass" interior doors no exchange</i>	<i>Ea.</i>	\$1,595
Louvered Door			
	<i>ilo Passageway</i>	<i>Ea.</i>	\$354
	<i>ilo Std Door</i>	<i>Ea.</i>	\$286
	<i>ilo Door w/Grill</i>	<i>Ea.</i>	\$192
Miscellaneous			
	<i>Sliding Double Doors ilo Hinged Door</i>	<i>Ea.</i>	\$130
	<i>Additional passage door (where indicated on plan)</i>	<i>Ea.</i>	\$432
	<i>White Passage Door w/ Grill (Utility Room)</i>	<i>Ea.</i>	\$454
	<i>White Passage Door w/ Finished Opening above Door(Utility Room)</i>	<i>Ea.</i>	\$353
Barn Door (Soild Core Grey Color) Hardware Included			
	<i>Add</i>	<i>Ea.</i>	\$1,055

Golden West Homes Confidential Option Price List General Interior

Mini Blinds

1" White Metal Mini Blinds T/O (Buster, Platinum)	STD	
1" White Metal Mini Blinds, Omit (Buster, Platinum)	ea	-\$10
1" White Metal Mini Blinds (Dream and Inspiration Series)	ea	\$29
2" White Faux ilo Metal ***** NOT AVAILABLE ON ALL WINDOW SIZES *****	ea	\$57
2" White Faux ***** NOT AVAILABLE ON ALL WINDOW SIZES *****	ea	\$68

Wood Cornice Box

White Only	ea	\$83
------------	----	------

Interior Opening w/ No Door

30" Opening	ea	\$192
48" Opening	ea	\$285

Walls Corners

Round Corner Walls throughout ILO Square Corners	Std	
--	-----	--

Special M/L Interior Close-Up

Consult Factory	\$501
-----------------	-------

Wardrobe Doors

Sliding Doors ilo Single Swing Door	\$130
Single Swing Door ilo Sliding Doors	\$48
Double Swing Doors ilo Single Swing Door	\$130
Double Swing Doors ilo Sliding Doors	\$0

Entertainment Center

w/ Rock Accent	\$2,123
----------------	---------

Interior Paint

Ship Loose Additional Interior Paint (Per Gallon)	\$38
---	------

Baseboard

2 1/4" Moulding Through Out	SW	\$260
	DW	\$411
	TW	\$660
4" Moulding Trough Out	SW	\$468
	DW	\$619
	TW	\$848

Crown Molding

4" Ceiling Crown Moulding		
	Shiploose plf	\$1.04
	Installed High Flat Homes Only plf	\$3.12

Wardrobe / Linen Closet / Coat Closet

Wardrobe, Drawer Component w/ top Shelves	\$338
Linen Closet or Pantry w/Pssg Door (5 wooden shelves)	\$755
Coat Closet w/Pssg Door	\$674
Coat Closet w/Pssg Door & Bridge	\$390
Wood Shelves and Wood Rods ilo Wire shelves Through Out	\$156
Add Additional 24" deep Wardrobe (Single Door)	\$560

Coffered Ceiling

Coffered Ceiling Crown Molding	\$156
--------------------------------	-------

Round Columns w/Arch

ea	\$1,152
----	---------

Golden West Homes Confidential Option Price List Fireplaces / Wood Stove

Fireplaces*		
Wood Burning		
<i>Stacked Stone w/Mantle to Match Cabinets and Flat Ceramic Hearth (Factory Choose Beige)</i>		\$1,555
<i>Stacked Stone w/Mantle to Match Cabinets and 12" Raised Ceramic Hearth (Factory Choose Beige)</i>		\$1,763
<i>Ceramic Surround w/ Sheetrock Mantle and Flat Hearth (Customer Select - Grey or Beige)</i>		\$1,535
<i>Ceramic Surround w/ Sheetrock Mantle and 12" Raised Hearth (Customer Select - Grey or Beige)</i>		\$1,555
Gas Burning		
<i>Stacked Stone w/Mantle to Match Cabinets and Flat Ceramic Hearth (Factory Choose Beige)</i>		\$2,590
<i>Stacked Stone w/Mantle to Match Cabinets and 2" Raised Ceramic Hearth (Factory Choose Beige)</i>		\$2,798
<i>Ceramic Surround w/ Sheetrock Mantle and Flat Hearth (Customer Select - Grey or Beige)</i>		\$2,382
<i>Ceramic Surround w/ Sheetrock Mantle and 12" Raised Hearth (Customer Select - Grey or Beige)</i>		\$2,590
<i>Direct Vent Gas Only Thru Sidewall or Endwall ilo Thru the Roof</i>		\$995
TV Niche above Fireplace		
	<i>TV Niche above Fireplace w/ TV Jack, Recpt and Raceway</i>	\$192
Stack Stone to Ceiling Fireplace		
	<i>Check with Factory Model Specific</i>	\$1,250
Electric Fireplace		
	<i>Ceramic Surround (Factory Choose Terra Bruno)</i>	\$1,407
<div style="background-color: yellow; padding: 2px;">* Roof Pipe Bracing will be Shipped Loose and if Required will need to be install at Set-up by Set-up.</div> <div style="background-color: yellow; padding: 2px;">* Some Fire Place and Wood Stove Marriage Line Locations May Require Onsite Installation Labor and Inspection</div> <div style="background-color: yellow; padding: 2px;">* Blowers are Not Available from the Factory</div>		
Wood Stove*		
	<i>Flat Wall - HUD Approved, Hearth Color is Factory Choose</i>	\$6,799
	<i>Corner - HUD Approved, Hearth Color is Factory Choose</i>	\$6,799
	<i>Add Stack Stone on (2) Wall Behind Wood Stove 48" High</i>	\$1,250
<div style="background-color: yellow; padding: 2px;">* Roof Pipe Bracing will be Shipped Loose and if Required will need to be install at Set-up by Set-up.</div> <div style="background-color: yellow; padding: 2px;">* Some Fire Place and Wood Stove Marriage Line Locations May Require Onsite Installation Labor and Inspection</div>		

Golden West Homes Confidential Option Price List Kitchen B-Splash Lay-Out.

Level #1

\$29.00 p/f

Level #6

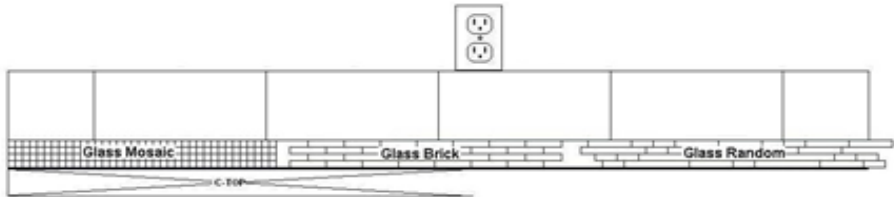
\$36.00 p/f



LEVEL #1

Level #2

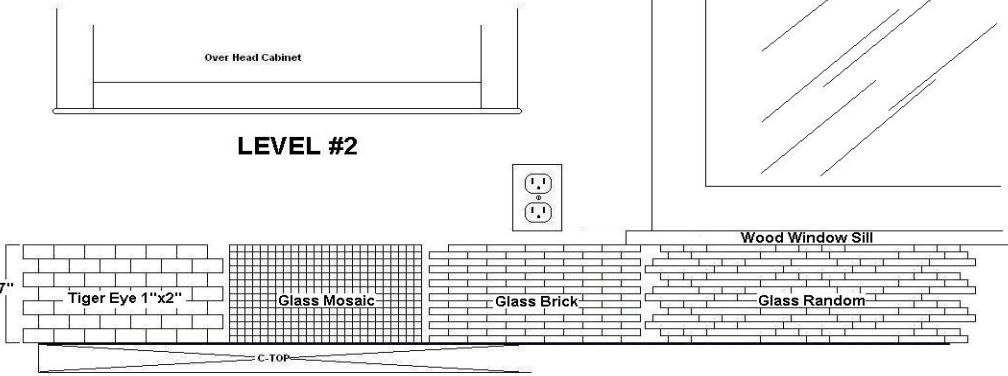
\$21.00 p/f



Level #3

Level #8

\$45.00 p/f



\$33.00 p/f

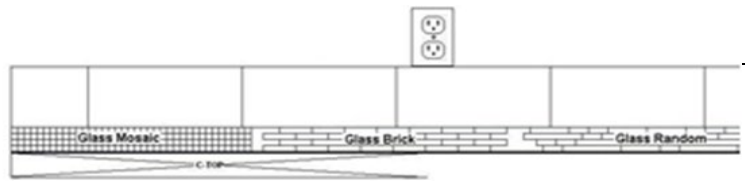

Golden West Homes Confidential Option Price List Kitchen-Misc.

Laminate		
<i>Laminate Counter Tops, 4" Laminate Backsplash, Laminate Edge (Dream Series) 4" Backsplash, Kitchen</i>	STD	
	\$50	
Crescent Edge T/Out		
	STD	
Ceramic Tile / Glass Tile (per ft. price)		
Backsplash		
Level #1 - 6" Ceramic / Glass Tile Backsplash	\$29 p/f	
Level #2 - 6" Glass Tile Backsplash	\$33 p/f	
Level #3 - Full Glass Tile Backsplash	\$60 p/f	
Level #6 - Full Subway Tile Backsplash	\$36 p/f	
Level #7 - Subway (2 Rows) Tile Backsplash	\$21 p/f	
Level #8 - Full Subway / Glass Tile Backsplash	\$45 p/f	
Level #9 - 2x4 Brick Joint Tile Backsplash Lavy	\$33 p/f	
Granite Slab Counter Top - 3cm		
<i>Granite Slab, Requires Ceramic B-Splash</i>	Call	
<i>4" 3cm Granite B-Splash, Per Ft.</i>	\$31	
<i>Flat Polished Edge</i>	STD	
<i>1/4 Demi Polished Bullnose</i>	Call	
<i>Full Bullnose Edge</i>	Call	
Quartz Slab Counter Top - 3cm		
<i>Quartz Slab, Requires Ceramic B-Splash</i>	Call	
<i>4" 3cm Quartz B-Splash, Per Ft.</i>	\$31	
<i>Flat Polished Edge</i>	STD	
<i>1/4 Demi Polished Bullnose</i>	Call	
<i>Full Bullnose Edge</i>	Call	
Sinks Available for Granite or Quartz (Not Required)		
<i>Kitchen Under Mount 60/40 Stainless Steel Sink</i>	\$647	
<i>Kitchen Under Mount Single Cell Stainless Steel Sink</i>	\$647	
<i>Stainless Steel Single Cell Farm Sink (Apron Front) (Includes Goose Neck)</i>	\$745	
<i>Bar Under Mount Single Cell Stainless Steel Sink</i>	\$695	
Sinks - Laminate		
<i>Stainless Steel, 8" Deep Sink</i>	STD	
<i>Stainless Steel, Single Cell, 8" Deep Sink</i>	\$458	
<i>Stainless Steel Single Cell Farm Sink (Apron Front) (Includes Goose Neck)</i>	\$360	
<i>Bar Sink, 16"x19", Stainless Steel</i>	\$192	
Faucets For Kitchen		
<i>Single Lever Faucet w/ Side Sprayer</i>	STD	
<i>Goose Neck Pull-Out Single Lever Faucet (Miss Kay) (Nickel Only)</i>	\$135	
<i>Spring Goose Neck Pull-Out Single Lever Faucet (Patriot) (Chrome)</i>	\$305	
<i>Pot Filler Faucet (Not Available w/Microwave) (Nickel Only)</i>	\$338	
Gas Prep for Range		
<i>Plumb for Gas w/ 110 Electrical Outlet</i>	\$94	
<i>Plumb for Gas w/ 220 Electrical Outlet</i>	\$156	
Appliance Packages		
Package #1 - Electric		
<i>23cf Refer, Smooth Top Self Clean Range, Microwave Rangehood, Dishwasher</i>		
<i>Black</i>		\$1,450
<i>Stainless Steel</i>		\$2,251
Package #1 - Gas		
<i>23cf Refer, Gas Self Clean Range, Microwave Rangehood, Dishwasher</i>		
<i>Black</i>		\$1,750
<i>Stainless Steel</i>		\$2,295
Package #2 Gallery - Electric		
<i>26cf Refer, Smooth Top Self Clean Range, Microwave Rangehood, Dishwasher</i>		
<i>Stainless Steel</i>		\$2,850
Package #2 Gallery - Gas		
<i>26cf Refer, Gas Self Clean Range, Microwave Rangehood, Dishwasher</i>		
<i>Stainless Steel</i>		\$3,150

Golden West Homes Confidential Option Price List Appliances

Standard Appliances		Range, Free Standing	
Refer, 18 Cu. Ft., Top Freezer, White or Black	STD	30", Elec, Self Clean, Coil Top - White or Black	\$125
Range, 30", Coil Top, Non-Self Clean, White or Black	STD	30", Elec, Self Clean, Coil Top - Stainless Steel	\$255
Omit Appliance (Standard or Package)		30", Elec, Self Clean, Smooth Top - White or Black	\$444
Refer	-\$400	30", Elec, Self Clean, Smooth Top - Stainless Steel	\$538
Range	-\$225	30", Elec, S/C, S/Top, Convection - Stainless Steel	\$854
Dishwasher	-\$150		
Microwave	-\$150		
Optional Appliance Upgrade			
Refrigerators		30", Gas, Non- Self Clean, Steel Grates - White or Black	\$250
Add ICEMAKER to 18 Cu. Ft. Refer	\$125	30", Gas, Non- Self Clean, Steel Grates - Stainless Steel	\$325
18 Cu. Ft., Top Freezer, Stainless Steel	\$255	30", Gas, Self Clean, Cast Iron Grates - White or Black	\$617
		30", Gas, Self Clean, Cast Iron Grates - Stainless Steel	\$693
23 Cu. Ft., S/S, Ice & Water Black	\$1,172		
23 Cu. Ft., S/S, Ice & Water, Stainless Steel	\$975		
26 Cu. Ft., S/S, Ice & Water, Stainless Steel (Gallery)	\$1,250		
27 Cu. Ft., Bottom Frzr, Ice & Wtr - Stainless Steel	\$2,350		
		Cooktop ilo Free Standing Range (Exchange Does Not Include Wall Oven)	
Range Hoods		30", Elec, Updraft, S/Top 5-Burner, Black (Gallery)	\$695
White or Black	STD	30", Elec, Updraft, S/Top 5-Burner, Stainless Steel (Gallery)	\$795
Stainless Steel	\$203	30", Gas, Updraft, Full Grate Top 5-Burner, Black (Gallery)	\$735
Disigner Stainless Steel & Glass (Includes Tile to Soffit)	\$711	30", Gas, Updraft, Full Grate Top 5-Burner, Stainless Steel (Gallery)	\$945
Microwaves			
Built-In w/ Trim Kit, 2.0 Cu. Ft, White or Black	\$416	Wall Oven	
Built-In w/ Trim Kit, 2.0 Cu.Ft, Stainless Steel	\$425	30", Single, Self Clean, FFEW3026TS,Stainless Steel	\$1,050
Rangehood, 1.6 Cu. Ft, White or Black	\$495	30", Mirco/Oven Combo, S/C, Convection, Stainless Steel (Gallery)	\$2,900
Rangehood, 1.6 Cu. Ft, Stainless Steel	\$545		
Rangehood, 1.7 Cu. Ft, White or Black (Gallery)	\$545		
Rangehood, 1.7 Cu. Ft, Stainless Steel (Gallory)	\$595		
Dishwasher			
Dishwasher, 24" - White or Black	\$508		
Dishwasher, 24", Stainless Steel	\$475		
Dishwasher, 24", Stainless Steel (Gallery)	\$795		

Golden West Homes Confidential Option Price List Bathrooms

Laminate		Granite Slab Counter Top - 3cm	
<i>Laminate Counter Tops, 4" Laminate Backsplash (Dream Series) 4" Backsplash , Per Bath</i>	STD \$25	<i>Granite Slab, Requires Ceramic B-Splash 4" 3cm Granite B-Splash, Per Ft. Flat Polished Edge</i>	Call \$31 STD
Crescent Edge	STD	<i>1/4 Demi Polished Bullnose Full Bullnose Edge</i>	Call Call
Ceramic Tile / Glass Tile (per ft. price)		Quartz Slab Counter Top - 3cm	
Backsplash		<i>Quartz Slab, Requires Ceramic B-Splash 4" 3cm Quartz B-Splash, Per Ft. Flat Polished Edge</i>	Call \$31 STD
<i>Level #1 - Glass Tile & Subway Backsplash Lavy</i>	\$25 p/f	<i>1/4 Demi Polished Bullnose Full Bullnose Edge</i>	Call Call
<i>Level #1 - Glass Tile & Subway Backsplash Tub Area</i>	\$25 p/f		
<i>Level #2 - Glass Tile Backsplash Lavy</i>	\$25 p/f		
<i>Level #2 - Glass Tile Backsplash Tub Area</i>	\$25 p/f		
<i>Level #7 - Subway Tile Backsplash Lavy</i>	\$19 p/f		
<i>Level #7 - Subway Tile Backsplash Tub Area</i>	\$19 p/f		
<i>Level #9 - 2x4 Brick Joint Tile Backsplash Lavy</i>	\$9 p/f		
<i>Level #9 - 2x4 Brick Joint Tile Backsplash Tub Area</i>	\$9 p/f		
Level #1		Sinks Available for Granite or Quartz	
		<i>Oval - Lavy Under Mount China Sink</i>	\$306
		<i>Square Corner - Lavy Under Mount China Sink (Required) Std. Top Mount Sink</i>	\$306 \$50
		Sinks	
		<i>China Sink</i>	STD
		<i>Additional Lavy Sink</i>	\$305
		<i>Vessel Sink w/ High Mount Faucet ipo Standard Sink (1)</i>	\$260
		<i>China Sink w/ Metal Faucet ilo Vessel Sink w/ High Mount Faucet</i>	-\$50
		<i>Pedestal Sink ilo Lavy Cabinet with Mirror</i>	\$0
		Faucets	
		<i>Dual Lever</i>	STD
		Commodes	
		<i>Enlongated Comfort Height Toilet (Replacing STD Toilet)</i>	STD \$104
		Lighting	
		<i>Recessed 6" Can, Gasketed for Wet Areas Wall Light Over Mirror, add</i>	\$57 \$57
		<i>Toe-kick heat registers (each)</i>	\$78
		<i>Towel and Tissue Bar</i>	\$38
		<i>Curved Shower Rod</i>	\$58
		<i>Grab Bar 24" (REQUIRES SPECIFIC LOCATION)</i>	\$68
		<i>Medicine Cabinet, Recessed w/ Mirror</i>	\$116
		<i>Raise Lavys to 36"</i>	\$52
		<i>Lighted Vanity Mirrors</i>	\$283
		<i>(1) Large Mirror ilo (2) small Mirrors</i>	\$56
		<i>Toilet Compartment, Add</i>	\$691
		<i>Add Opt. 1/2 Bath w/Pedestal Sick</i>	\$1,294
		<i>Add Opt. Full Bath</i>	\$2,369
Tub Front			
		LEVEL #1	
			
		LEVEL #2	
			
<i>Glass Tile Tub Front on Soaker Tubs</i>	\$70 p/f		

Golden West Homes Confidential Option Price List Tub-Showers Misc.

60" Tub/Shower		Shower Doors	
1 Pc Fiberglass Tub/Shower	STD	<i>Inline Shower Doors</i>	STD
1 Pc X-Large Fiberglass Tub/Shower ilo Fiberglass Tub/Shower	\$244	<i>Pivot Shower Door 60"</i>	\$203
		<i>(Pivot Door STD on 36" & 48" Showers)</i>	
60" Fiberglass Stall Shower		Framless 60" Pivot Door (May Not Work in Some Models)	\$600
ilo 1PC Fiberglass Tub/Shower	\$559	Shower Glass Wall - No Door (32x64)	\$735
ilo 48" Shower	\$335		
ilo 36" Shower	\$335		
Special Needs Shower - w/ Fold-up Seat, Hand Held Shower Head	\$2,444	Miscellaneous	
		<i>Additional Shower Head and Diverter</i>	\$231
		<i>Hand Held Shower Head w/Slide Arm</i>	\$314
		<i>Add Tub/Shower Enclosure</i>	\$203
		<i>Rain Shower Head - Extended Arm Wall Mount</i>	\$168
Other Tub Options		Other Shower Options	
<i>Drop-In Acrylic 60" Oval Tub (ilo Tub/Shower)</i>	\$1,261	60 x 42 Ceramic Tile Shower w/Fiberglass Pan	\$3,843
		60 x 42 Ceramic Tile Shower w/Fiberglass Pan w/ Bench	\$4,155
<i>Permalux, 72" Soaking Tub (ilo Tub/Shower Where Applies)</i>	\$1,697	60 x 42 Ceramic Tile Acrylic Block Shower with no enclosure	\$4,467
<i>Permalux, 72" Soaking Tub (ilo Acrylic Oval Where Applies)</i>	\$312	60 x 42 Ceramic Tile Acrylic Block Shower with no encl. w/ Bench	\$4,850
		60 x 42 Ceramic Tile Acrylic Block Shower with no encl. w/ Full Rear Wall Bench	\$5,663
<i>Freestanding, 59" Soaking Tub (ilo Tub/Shower Where Applies)</i>	\$2,150	60 x 42 Fuax Marble w/Frameless Pivot Door	\$5,768
<i>Freestanding, 59" Soaking Tub (ilo Permalux 72")</i>	\$1,200	72 x 48 Spa Ceramic w/Half Glass Wall	\$4,779
		72 x 48 Spa Ceramic w/Half Glass Wall w/ Bench	\$5,229
		60 x 36 Venetian Shower w/Half Glass Wall w/Bench, Dual Dvtr, Hand Held	\$7,887
		<i>Soap/Shampoo Shelf, Built-In (Only Available with Tile Showers)</i>	\$183
		<i>Soap Shelf, Corner, Faux Marble</i>	\$105

** All Tile Shower are Available with Accent Area **

Shower Glass Wall - No Door (32x64)

Level #1

Level #3

Golden West Homes Confidential Option Price List Tags

	Tag Size	
TAGS - 13' 6" x 27'		
1. Family Room w/ SGD & (4) - W-35	364 Sq.Ft.	\$22,007
2. 2 Bedrooms & Bathroom w/ (4) W-35	364 Sq.Ft.	\$23,772
TAGS - 15' x 27'		
1. Family Room w/ SGD & (4) - W-35	405 Sq. Ft.	\$22,007
2. 2 Bedrooms & Bathroom w/ (4) W-35	405 Sq. Ft.	\$22,066
TAGS - 15' x 30' (Only Available on 30 Wide Homes)		
1. Family Room w/ SGD & (4) - W-35	405 Sq. Ft.	\$22,007
2. 2 Bedrooms & Bathroom w/ (4) W-35	405 Sq. Ft.	\$26,229
Microlam Ridge Beam for Open Tags		\$2,854
** ADDING A TAGS MAY CHANGE THE COST OF SOME OPTION		

Golden West Homes Confidential Option Price List Carpet Options Inspiration Series

Model #	Square Yards	New Wave	All In One
Ounces		25	25
FHA		X	X

5.3# Rebond	7# Rebond
X	X

Omit Carpet & Pad

Inspiration Series

SW	ING662M ALDER II	70	STANDARD	\$776
DW	ING362A MYRTLE	78	STANDARD	\$864
	ING382F REDWOOD II	80	STANDARD	\$886
	ING442F CYPRESS	82	STANDARD	\$909
	ING481F FRASER	76	STANDARD	\$842
	ING482F HEMLOCK	94	STANDARD	\$1,042
	ING486F MANZANITA	89	STANDARD	\$986
	ING521F NOBLE	80	STANDARD	\$886
	ING524F WISTERIA	118	STANDARD	\$1,307
	ING561F SPRUCE	107	STANDARD	\$1,186
	ING564F SHASTA	103	STANDARD	\$1,141
	ING563F COTTONWOOD	88	STANDARD	\$975
	ING602F HOLLY	100	STANDARD	\$1,108
	ING605F GRAND NOBLE	92	STANDARD	\$1,019
	ING681F EUCALYPTUS	133	STANDARD	\$1,474
	ING682F MAPLE	127	STANDARD	\$1,407
	ING683F CEDAR	124	STANDARD	\$1,374
	ING684F WESTERN LARCH	106	STANDARD	\$1,174
TW	ING501K PONDEROSA	187	STANDARD	\$2,072
	ING601K WHITE PINE	207	STANDARD	\$2,294
	ING621K TAMARACK	145	STANDARD	\$1,607
	ING622K TAMARACK II	148	STANDARD	\$1,640
	ING623K COASTAL REDWOOD	145	STANDARD	\$1,607

	STD	\$70
	STD	\$78
	STD	\$80
	STD	\$82
	STD	\$76
	STD	\$94
	STD	\$89
	STD	\$80
	STD	\$118
	STD	\$107
	STD	\$103
	STD	\$88
	STD	\$100
	STD	\$92
	STD	\$133
	STD	\$127
	STD	\$124
	STD	\$106
	STD	\$187
	STD	\$207
	STD	\$145
	STD	\$148
	STD	\$145

-\$385
-\$429
-\$440
-\$451
-\$418
-\$517
-\$490
-\$440
-\$649
-\$589
-\$567
-\$484
-\$550
-\$506
-\$732
-\$699
-\$682
-\$583
-\$1,029
-\$1,139
-\$798
-\$814
-\$798

Added Tag 13'-6"x27'	40	STANDARD	\$443
----------------------	----	----------	-------

\$0	STD
-----	-----

-\$220

Golden West Homes Confidential Option Price List Carpet - Carpet Options Platinum Series

Model #	Square Yards	New Wave	All In One
Ounces		25	25
FHA		X	X

7# Rebond
X

Omit Carpet & Pad

PLATINUM SERIES

27	GSP602F PLATINUM SERIES	160	STANDARD	\$1,773
	GSP707F PLATINUM SERIES	149	STANDARD	\$1,651
30	GSP705G PLATINUM SERIES	182	STANDARD	\$2,017
	GSP724G PLATINUM SERIES	142	STANDARD	\$1,573
TW	GSP642K PLATINUM SERIES	226	STANDARD	\$1,166
	GSP643K PLATINUM SERIES	240	STANDARD	\$1,238
	GSP683K PLATINUM SERIES	228	STANDARD	\$1,176

STD
STD
STD
STD
STD
STD
STD

-\$1,280
-\$1,192
-\$1,456
-\$1,136
-\$1,808
-\$1,920
-\$1,824

Golden West Homes Confidential Option Price List Carpet Misc. Models

Model #	Square Yards	New Wave	All In One
Ounces		25	25
FHA		X	X

5.3# Rebond	7# Rebond
X	X

Omit Carpet & Pad

BUSTER SERIES

THE 52 BUSTER - J&M	88	STANDARD	\$975
THE 56 BUSTER - J&M	115	STANDARD	\$1,274
THE 66 BUSTER - J&M	131	STANDARD	\$1,451

STD	\$88
STD	\$115
STD	\$131

-\$1,280
-\$1,279
-\$1,278

MANOR SERIES

GP523F "CHICO MANOR"	88	STANDARD	\$975
GP562F "CHICO MANOR"	95	STANDARD	\$1,053
GP681F "CHICO MANOR"	136	STANDARD	\$1,507

STD	\$88
STD	\$95
STD	\$136

-\$1,276
-\$1,275
-\$1,274

ZENITH SERIES - J&M Only

ZS663F ZENITH SERIES - J&M	124	STANDARD	\$1,374
----------------------------	-----	----------	---------

STD	\$124
-----	-------

-\$1,272

RWG Series - RWG Only

RGS441F "SILVER" - RWG	82	STANDARD	\$909
RGS481F "SILVER" - RWG	97	STANDARD	\$1,075
RGS521F "SILVER" - RWG	95	STANDARD	\$1,053
RGS561F "SILVER" - RWG	112	STANDARD	\$1,241
RGS601F "SILVER" - RWG	122	STANDARD	\$1,352
RGG701G "GOLD" - RWG	160	STANDARD	\$1,773

STD	\$82
STD	\$97
STD	\$95
STD	\$112
STD	\$122
STD	\$160

-\$1,270
-\$1,269
-\$1,268
-\$1,267
-\$1,266
-\$1,265

PATRIOT SERIES

THE WASHINGTON (PATRIOT)	92	STANDARD	\$1,019
THE LINCOLN (PATRIOT)	114	STANDARD	\$1,263

STD	\$92
STD	\$114

-\$1,263
-\$1,262

Golden West Homes

Confidential Option Price List

Model Options

DRM 562N	Opt. Kitchen Location	\$619
DRM 442A	Bedroom #3 ilo Den	\$885
DRM 482A	Bedroom #3 ilo Den	\$885
DRM 502A	Bedroom #3 ilo Den	\$885
DRM 441F	Bedroom #3 ilo Den	\$1,664
DRM 442F	Alt. Kitchen #2	\$895
DRM 444F	Alt. Kitchen #2	\$895
DRM 481F	Alt. Kitchen #2	\$895
DRM 482F	Alt. Utility/Primary Bath	\$775
DRM 484F	Alt. Kitchen #2	\$1,895
DRM 486F	Opt. Den (Bonus Room) ilo Bed #4	-\$100
DRM 521F	Alt. Kitchen #2	\$895
	Opt. Coat/Linen	\$523
DRM 561F	Alt. Kitchen #2	\$895
DRM 563F	Alt. Kitchen/Dining	\$1,620
DRM 601F	Alt. Kitchen #2	\$895
	Opt. Family Bath	\$695
DRM 682F	Alt. Kitchen #2	\$895
	Alt. Kitchen #3	\$895
	Opt. Family Bath	\$695
	Opt. 5th Bedroom	\$1,431
	Opt. Large Wardrobe ilo Retreat	\$824

DRM 683F	Opt. 4th Bedroom	\$1,278
DRM 711F	Opt. 4th Bedroom	\$1,082
	Opt. 4th & 5th Bedroom with Bath	\$5,498
ING 662M	Opt. 3 Bedroom / 1 Bath	\$0
ING 362F	Alt. Kitchen	\$761
ING 481F	Opt. Bedroom #4 ilo Play Room	\$1,300
ING 486F	Opt. Bedroom #3 ilo Den	\$1,300
ING 521F	Alt. Kitchen	\$0
	Opt. Bedroom #4 / Den	\$525
ING 561F	Ext. Upgrade #3, No Porch	\$3,307
	Alt. Kitchen #2	\$1,895
	Opt. Den ilo Bed #3	\$125
	Add Desk & Overhead in Hall w/ Den Opt.	\$659
	Opt. P/Bath, P/Bedroom & Bedroom #2 Flip	\$2,500
	Opt. Retreat ilo Bedroom	-\$100
ING 564F	Alt. Kitchen #2 w/ Wood Fireplace	\$2,325
	Alt. Kitchen #3	\$1,919
	Opt. Bedroom #3 ilo Den	\$1,300
ING 602F	Alt. Kitchen	\$535
	Opt. 4th Bedroom	\$1,278
ING 605F	Alt. Kitchen	\$0
ING 681F	Alt. Kitchen #2	\$759
	Alt. Kitchen #3	\$359
	Pantry Kit ilo Large Utility	\$347
	Opt. Jack & Jill Bath	Call
	Opt. Front Side Utility Room	\$2,760
	Opt. 4th & 5th Bedrooms	\$723
	Opt. 4th Bedroom / Family room	\$1,082
	Opt. 4th Bedroom / Den	\$573
	Opt. Porch / Family Room	\$3,100
	Opt. Wet Bar	\$1,341

Golden West Homes

Confidential Option Price List

Model Options

ING 682F

Alt. Kitchen #2	\$759
Alt. Kitchen #3	\$359
Pantry Kit ilo Large Utility	\$347
Opt. 1/2 Bath	\$1,294

ING 684F

Alt. Kitchen / Dining Room	\$895
Opt. Bedroom #4 ilo Family Room	\$1,300
Opt. 1/2 Bath	\$1,294

ING 501K

Opt. Utility / G/Bath	\$1,750
-----------------------	---------

ING 601K

Bedroom #4 ilo Den	\$1,278
--------------------	---------

ING 621K

Alt. Kitchen #3	\$885
Opt. Hutch in Dining Room	\$1,236

GSP 705G

Opt. Front Side Utility Room	\$2,760
Opt. Bedroom #4 / Smaller Utility Room	\$595
Opt. Butlers Pantry	\$1,445

GSP 642K

Opt. Bedroom #5 ilo Bonus Room	\$1,278
Opt. P/Bathroom	\$0

GSP 643K

Opt. Bedroom #4 ilo Bonus Room	\$1,278
Opt. Learning Center & Walk-in Wardrobes ilo Bonus Room	\$3,223
Opt. Utility / P/Wardrobe Location	\$1,750
Opt. Wet Bar	\$6,825

GSP 683K

Opt. Retreat	-\$100
Bedroom #4 ilo Study	\$1,278
Alt. Kitchen #2	\$885

52 Buster

Alt. Kitchen	\$359
Opt. Bedroom #3 ilo Study	\$454

56 Buster

Alt. Kitchen	\$1,632
Add Base & Overhead ilo Deck Kit.	\$501
Opt. Bedroom #5	\$855

66 Buster

Opt. Vanity, Mirror and Linen	\$657
Opt. Bedroom #4	\$1,199

GP523F "CHICO MANOR"

Alt. Kitchen	\$359
--------------	-------

GP681F "CHICO MANOR"

Opt. Vanity, Mirror and Linen	\$657
Opt. Bedroom #4	\$1,199

ZS663F ZENITH SERIES - J&M

Opt. Front Side Utility Room	\$2,760
------------------------------	---------

RGS441F "SILVER" - RWG

Opt. Porch ilo Bedroom	\$3,100
------------------------	---------

RGS561F "SILVER" - RWG

Opt. Den ilo Bed #3	-\$100
---------------------	--------

RGG701G "GOLD" - RWG

Opt. Front Side Utility Room	\$2,760
Opt. Hidden Pantry	\$895

THE LINCOLN (PATRIOT)

Opt. Family Room ilo Bedroom #4	\$895
---------------------------------	-------